

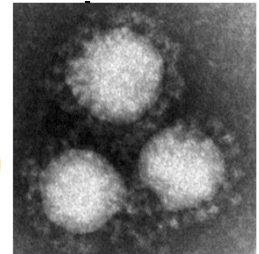
April 24, 2020

Attention, Citizens of Okayama Prefecture

~A request concerning infectious diseases stemmed from the new corona virus~

What is the corona virus?

When infected, the corona virus causes fevers, throat pain, coughing and cold-like symptoms. In severe cases, it can lead to pneumonia. Washing one's hands with soap and disinfecting with alcohol is known to be effective measures for preventing it.



Source: National Institute of Infectious Diseases

<To the Citizens of Okayama Prefecture>

- As with the common cold or influenza, please be sure to keep general preventative measures for infectious diseases in mind, such as coughing etiquette and washing one's hands.
- If either of the following apply to you, please contact a returnee/contactee consultation center (contact information on the reverse side) before being examined:

① If you have symptoms of a cold or have contracted of fever of 37.5 degrees or higher that has continued for four or more consecutive days

(This includes cases that require you to take antipyretic medication)

② If you are experiencing intense lethargy or respiratory problems

For the elderly or those who have underlying diseases, please consult with your family doctor if the above conditions have continued for two or more days.



In the case that your consultation results in you being suspected of being infected with the new corona virus, you will be directed to a hospital that specializes in examining returnees and foreign patients.

- If you have symptoms, please take a break from work or school and refrain from going out or participating in events.
- For updates on related information, please visit the Ministry of Health, Labor and Welfare's website.



https://www.mhlw.go.jp/stf/seisakunitsuite/bunya/0000164708_00001.html

If you have any questions or concerns about the new corona virus or the infectious diseases that stem from it, please contact our consultation desk.

New Corona Virus and Infectious Disease Consultation Desk

Phone: 086-226-7877 Fax: 086-225-7283

24-hour Consultation We accept contact via FAX on weekdays from 9AM to 5PM



©Okayama Prefecture
Momocchi and Uracchi



Okayama Prefecture Department of Health and Social Welfare, Health Promotion Division

(April 24, 2020)

Returnee and Contactee Consultation Centers (24-hour Support)

Establishment Name	Telephone Number		FAX	Municipality of Jurisdiction
Okayama City Public Health Center	086-803-1360		086-803-1337	Okayama City
Kurashiki City Public Health Center	086-434-9810		086-434-9805	Kurashiki City
Bizen Healthcare Center	086-272-3934		086-271-0317	Tamano City, Setouchi City, Kibi Chuo Town
Bizen Healthcare Center, Tobi Branch	0869-92-5180		0869-92-0100	Bizen City, Akaiwa City, Wake Town
Bicchu Healthcare Center	086-434-7072 (From 9AM to 5PM only)	086-434-7024	086-425-1941	Soja City, Hayashima Town
Bicchu Healthcare Center, Ikasa Branch	0865-69-1675	086-434-7072 (Weekends and holidays: from 9AM to 5PM only)	0865-63-5750	Kasaoka City, Ibara City, Asakuchi City, Satosho Town,
Bihoku Healthcare Center	0866-21-2836		0866-22-8098	Takahashi City
Bihoku Healthcare Center, Niimi Branch	0867-72-5691		0867-72-8537	Niimi City
Maniwa Healthcare Center	0867-44-2990		0867-44-2917	Maniwa City, Shinjo Village
Mimasaka Healthcare Center	0868-23-0163		0868-23-6129	Tsuyama City, Kagamino Town, Kumenan Town, Misaki Town
Mimasaka Healthcare Center, Shoei Branch	0868-73-4054		0868-72-3731	Mimasaka City, Shoo Town, Nagi Town, Nishiawakura Village

※ Phone calls made to Okayama City Public Health Center and Kurashiki City Public Health Center on weekdays between 9PM and 9AM or on weekends and holidays between 5PM and 9AM will be connected to an answering machine. Please respond to its inquiries accordingly.

※ You will be connected to an automated answering machine when contacting Bicchu Health Center and Bihoku Health Center (including Ikasa Support Center and Niimi Support Center respectively) between 5PM and 9AM. Please respond to the answering machine accordingly.

※ Phone calls made to other health centers on weekdays between 5PM and 9AM or on weekends and holidays will be directed to an answering machine. Please respond to its inquiries accordingly.

※ Faxes are accepted on weekdays from 9AM to 5PM.